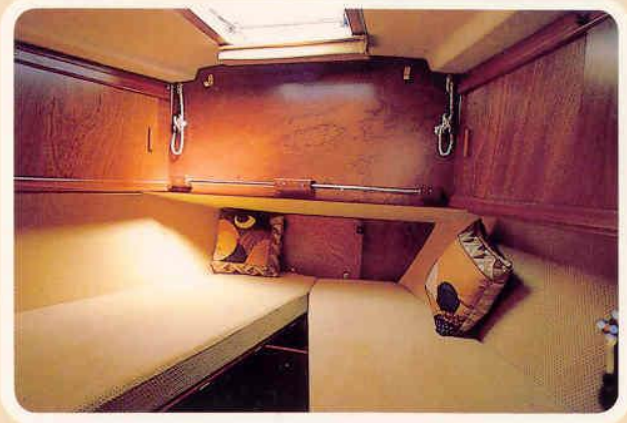


MARAMU



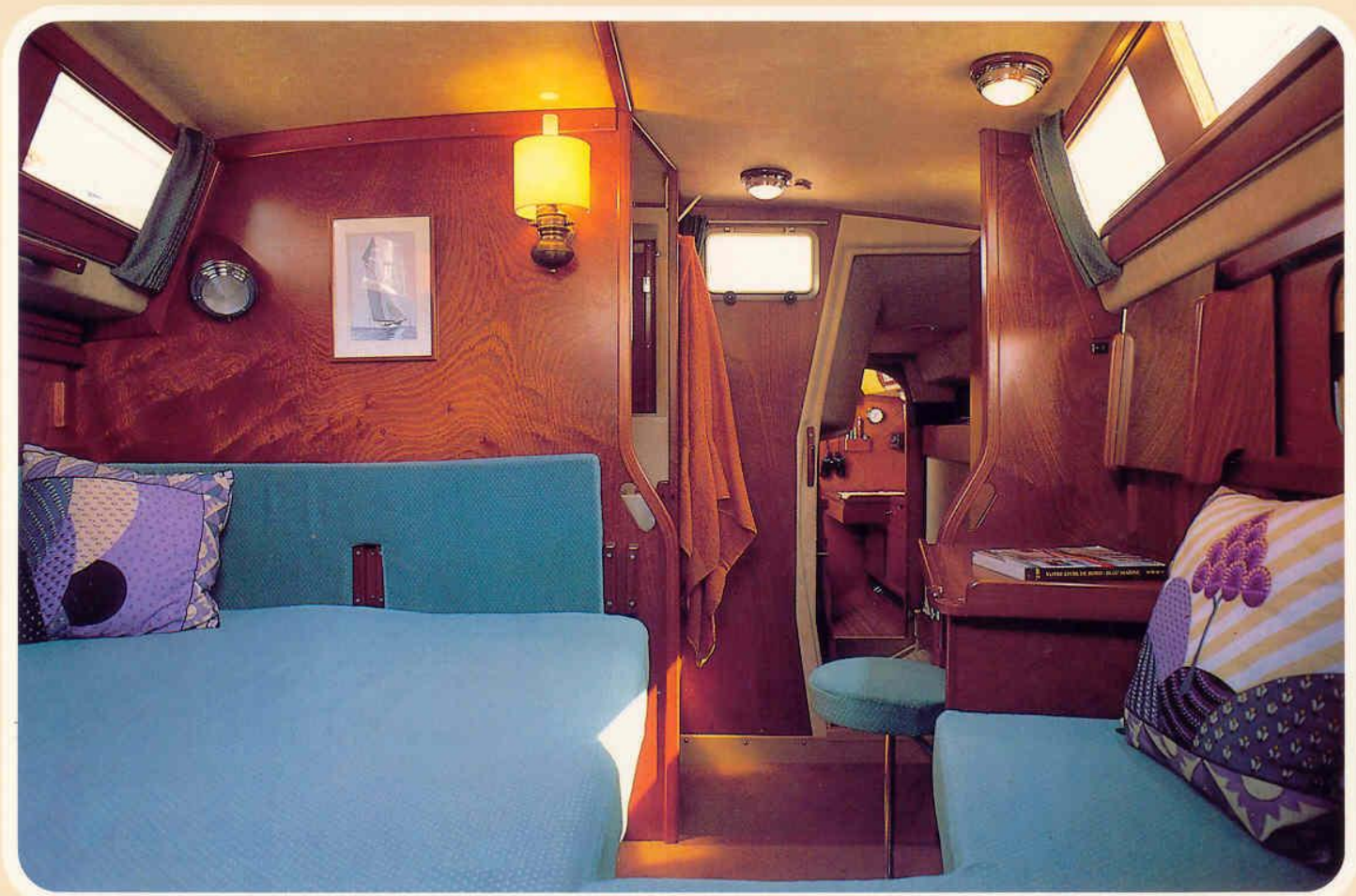
AMEL



the fore cabin



the head with shower



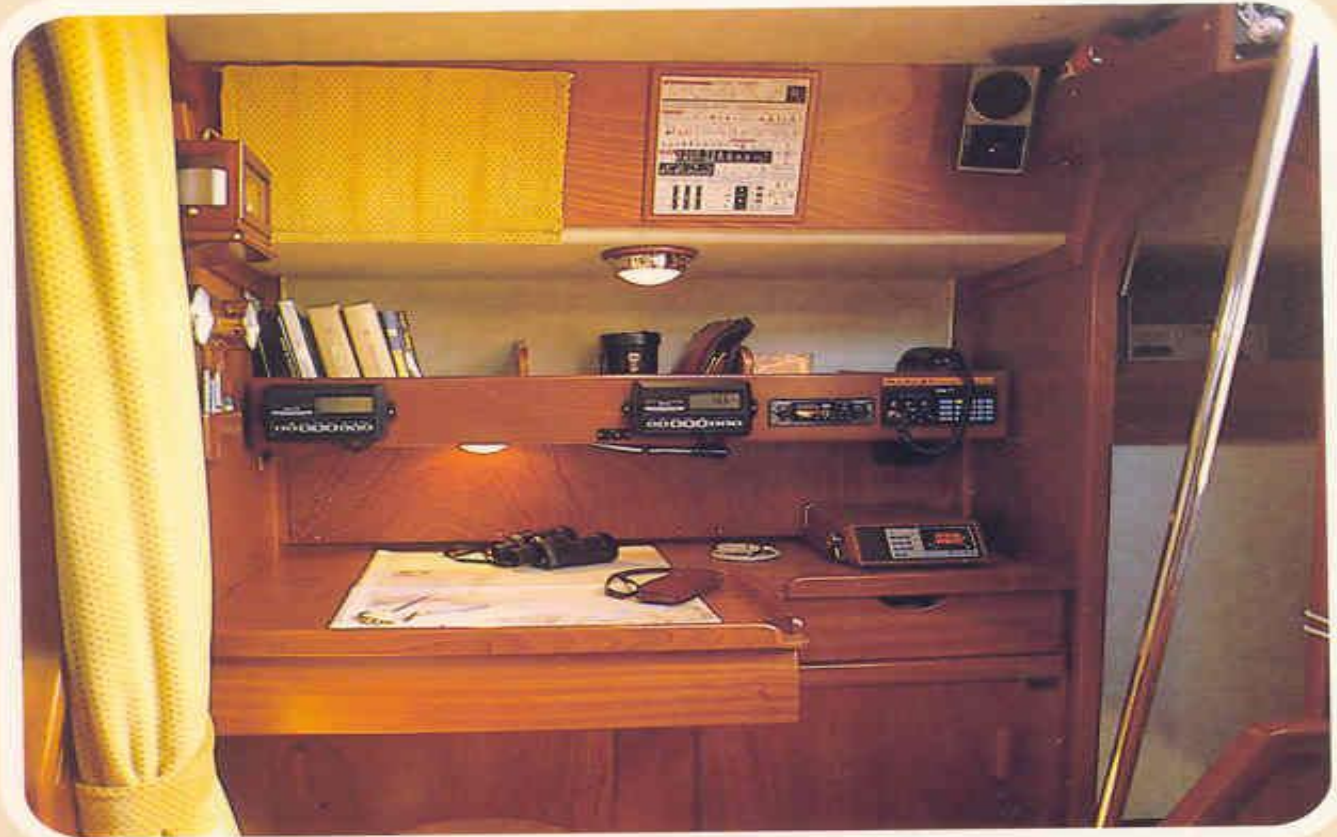
the aft cabin



the salon



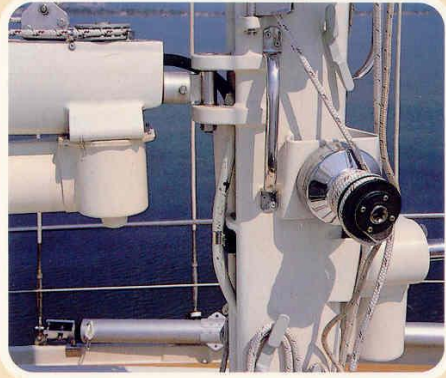
the galley



the nav station



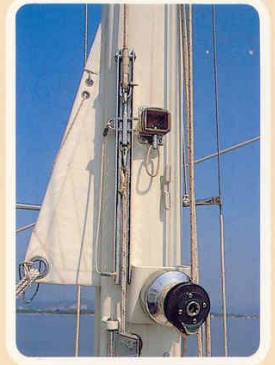
the main mast



the electric roller furling mainsail and electric clew



the handle-operated jib sheet traveler



the mainsail halyard tightening system



the electric roller furling jib



the electric switchboard



mainsheet traveler and control system



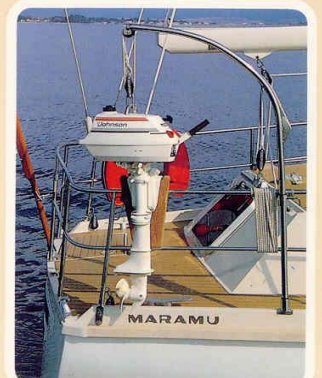
the mizzen mast foot



pole storage



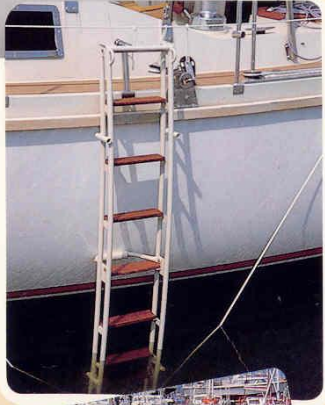
under 3 furling sails, at 8 knots



The outboard engine davit



the swim/boarding ladder

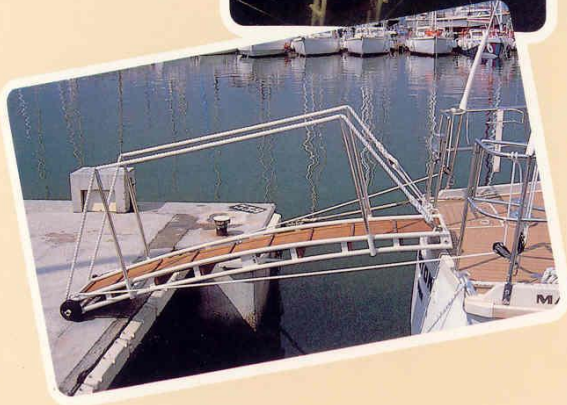


the poles in place

the deck forward



the deck aft and locker



steering position

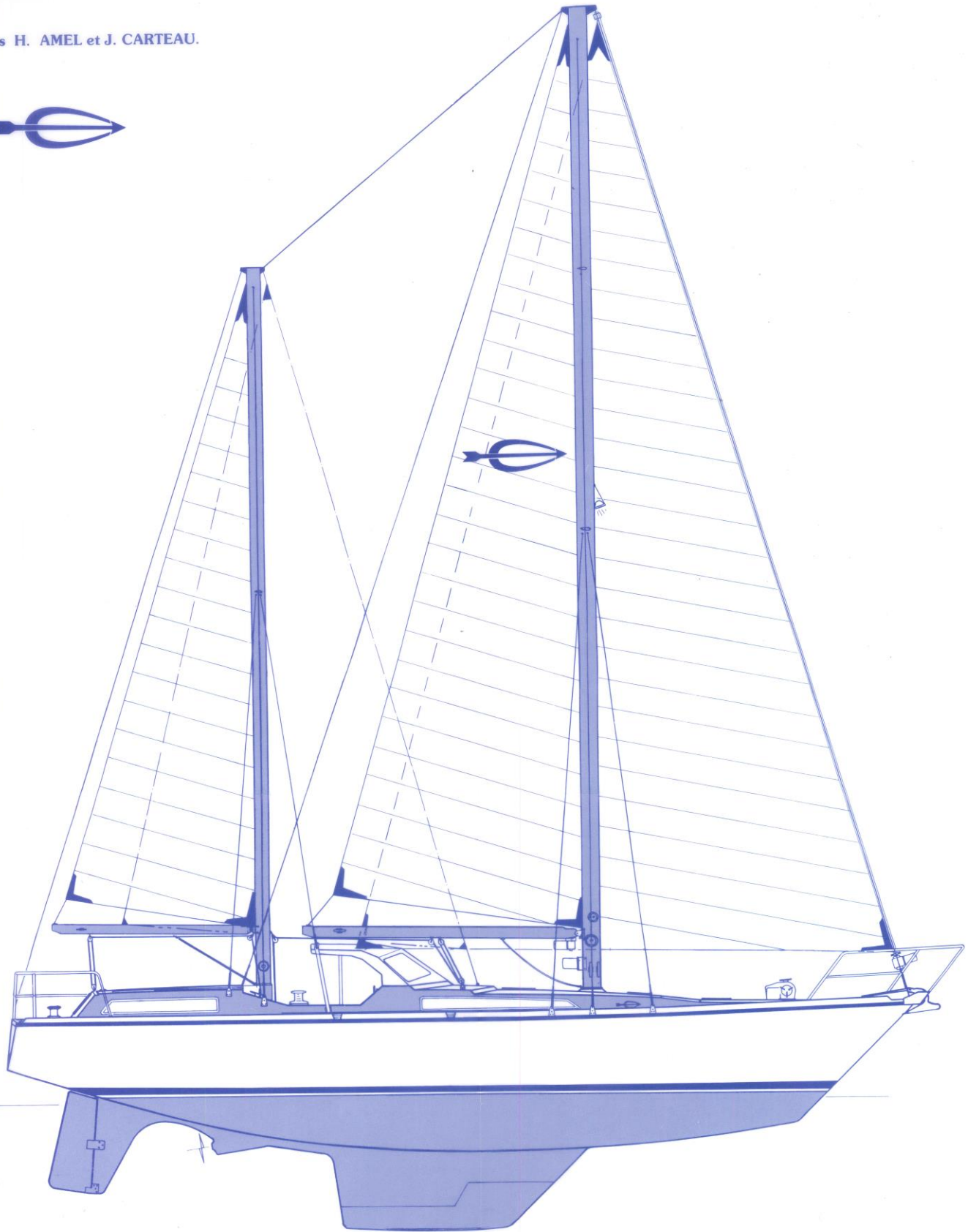


the covered wheel



RAMU

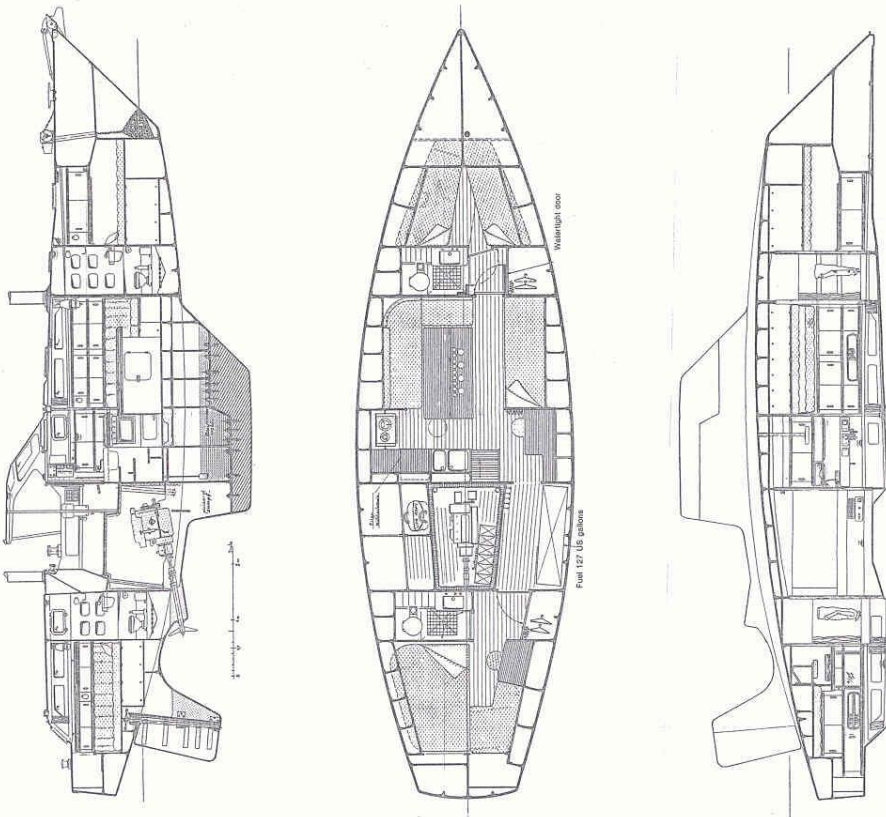
es H. AMEL et J. CARTEAU.



MARAMU

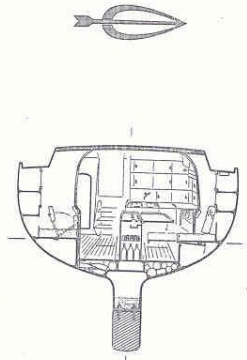
48 ft. Ketch

Designers : H. AMEL and J. CARTEAU



L.O.A.	48' 0"
L.W.L.	35' 9"
Beam	13' 1"
Beam on waterline	11' 3"
Draft	6' 6"
Bridge clearance	55' 8"
Freeboard forward	4' 8"
Freeboard aft	4' 2"
Displacement, loaded	28,440 lbs.
Total weight, empty	23,150 lbs.
Ballast	8,820 lbs.
Maximum sail area	1,302 sq.ft.
Sail area, close hauled	1,033 sq.ft.
Mainsail area	291 sq.ft.
Mizzen area	140 sq.ft.
Jib area	603 sq.ft.
Mizzen staysail area	269 sq.ft.
Balloon area	646 sq.ft.
Engine	Perkins 60 H.P.
Cruising speed under power	8 Knots
Economical speed under power	7 Knots
Maximum speed under power	8.6 Knots
Fuel capacity	127 US gallons
Range at cruising speed	600 miles
Range at economical speed	900 miles
Water capacity	285 US gallons
Customs tonnage (certif. No 2571)	20.85 tons

Approved by French Merchant Navy 1st category



Equipment includes :

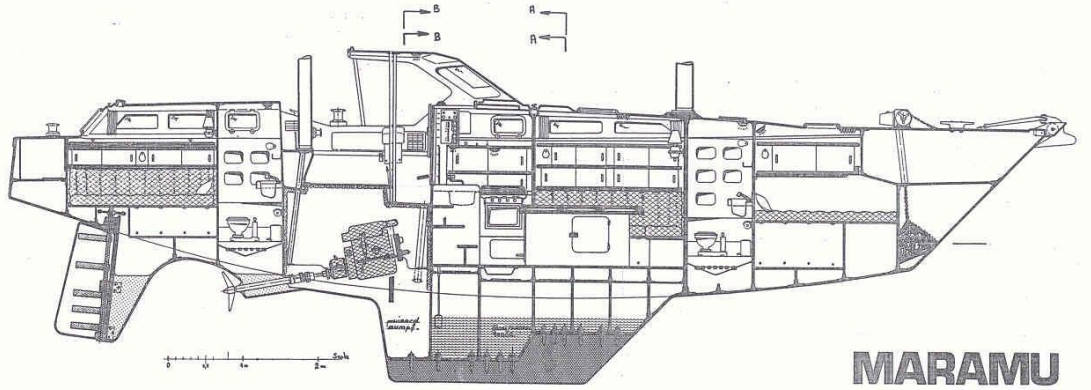
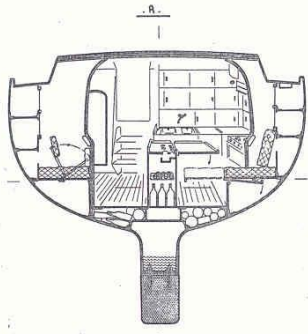
- electric roller-furling jib and main
- handle-operated jibsheet traveler
- handle-operated mainsheet traveler
- electric clew adjustment on the boom
- the unique Amel pole system
- and many other additional features.

"I formerly owned one of the original Maramus and now have the new model shown in this brochure. Each time I go on board I am happy and enthusiastic. For me, this is really the ideal cruising boat."

H. Amel

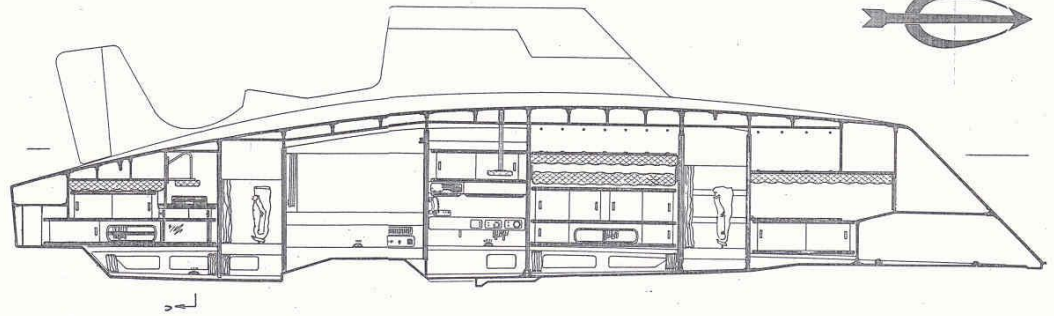
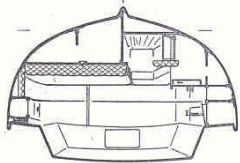
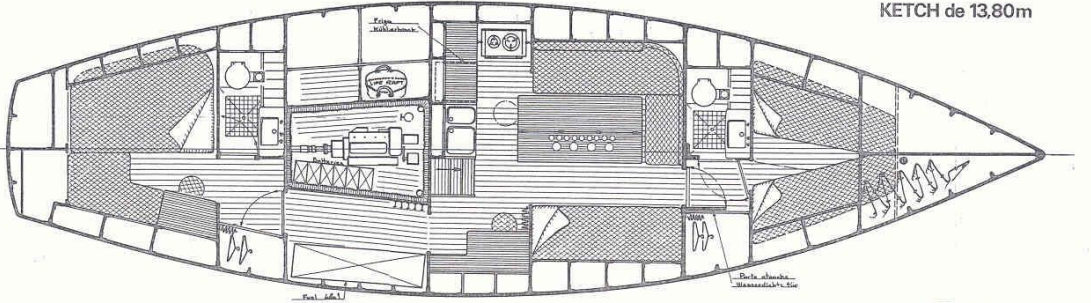
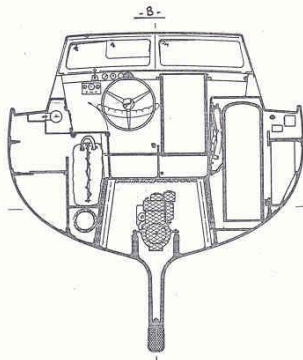
under jib and one balloon





MARAMU

KETCH de 13,80m





MARAMU

KETCH DE 13,80 M.

ARCHITECTES: H. AMEL & J. CARTEAU

Longueur / Länge	13,80 m
Longueur flottaison / Länge Wasserlinie	10,90 m
Largeur / Breite	4,00 m
Largeur flottaison / Breite Wasserlinie	3,45 m
Tirant d'eau / Tiefgang	1,90 m
Tirant d'air / Höhe à Wasserlinie	16,00 m
Franc-bord AV / Freibord vorn	1,47 m
Franc-bord AR / Freibord achtern	1,27 m
Déplacement en charge / Verdrängung	12,50 T
Poids total à vide / Gesamtgewicht leer	9,50 T
Aileron lesté / Ballast	3,60 T
Surface voilure maximum / Maximale Segelfläche	121 m ²
Surface voilure au plus près / Segelfläche am Wind	96 m ²
Surface grand-voile / Segelfläche Grosseegel	27 m ²
Surface artimon / Segelfläche Besan	14 m ²
Surface génois / Segelfläche Genua	55 m ²
Surface grand foc / Segelfläche grosse Fock	38 m ²
Surface foc de route et d'artimon / Segelfläche normale- und Besanfoc	25 m ²
Surface petit foc / Segelfläche kleine Fock	12 m ²
Moteur / Motor	60 CV/PS
Vitesse croisière moteur / Fahrtgeschwindigkeit unter Motor	8 noeuds / Knoten
Vitesse économique / Spargeschwindigkeit	7 noeuds / Knoten
Vitesse maximum / Maximale Geschwindigkeit	8,6 noeuds / Knoten
Carburant / Brennstoff	480 l
Autonomie / Reichweite	600/700 m / Sm
Réservoir eau douce chaude et froide / Frischwasser heiss und kalt	1.080 l
Jauge en Douanes (certif. n° 2571) / Zollregister-tonnen	20,85 tx
Homologation Marine Marchande 1 ^{ère} catégorie / Zulassung der französischen Handelsmarine für 1. Kategorie.	

